

Northern Hamster Club Sheffield Show 24 <sup>th</sup> March 2024			
SYRIAN JUDGE: Wendy Palmer		BOOK STEWARD: Catherine Mason	
	SH Golden 6 entries	SH Cream 3 entries	SH AOC Male 5 entries
1	Arundel	Lilliput	Oswald's
2	Moonstone	Oswald's	Moonstone
3	Lilliput	Lilliput	Moonstone
R	A Dray & A Pahi-Dray	x	A Dray & A Pahi-Dray
	SH AOC Female 5	SH Patterned 5 entries	SH Satin 1 entry
1	Moonstone	Moonstone	Lilliput
2	Oswald's	A Dray & A Pahi-Dray	x
3	Moonstone	A Dray & A Pahi-Dray	x
R	Oswald's	Moonstone	x
	LH Cream 4 entries	LH Self 0 entries	LH AOC Male 2 entries
1	Oswald's	x	Arundel
2	Lilliput	x	Arundel
3	Oswald's	x	x
R	Moonstone	x	x
	LH AOC Female 2	LH Patterned 2 entries	LH Satin 1 entry
1	Lilliput	Lilliput	Lilliput
2	Arundel	A Dray & A Pahi-Dray	x
3	x	x	x
R	x	x	x
	SH & LH Rex 3 entries	Junior 0 entries	Novice 0 entries
1	Moonstone	x	x
2	Arundel	x	x
3	Moonstone	x	x
R	x	x	x
	Intermediate 0 entries	Small Hamstery 10	Breeder 27 entries
1	x	Arundel	Oswald's
2	x	Arundel	Arundel
3	x	Arundel	Moonstone
R	x	Arundel	Lilliput
	Young Stock 8 entries	Grand Challenge 41	Non-Standard 1 entry
1	Moonstone	Oswald's	A Dray & A Pahi-Dray
2	Moonstone	Moonstone	x
3	Arundel	Arundel	x
R	Moonstone	Moonstone	x
	Syrian BIS	Syrian Reserve BIS	Junior BIS & RBIS
	Oswald's Hamstery	Moonstone Hamstery	x x x

Northern Hamster Club      Sheffield Show      24 <sup>th</sup> March 2024			
DWARF JUDGE: Fraser Avill      BOOK STEWARD: Susan Washbrook			
	Normal Campbell 0	Agouti Campbell 1	Self Campbell 1
1	x	Lilliput	PS Hams
2	x	x	x
3	x	x	x
R	x	x	x
	Mottled Campbell 0	Normal WW 7 entries	Sapphire WW 10
1	x	Oswald's	Oswald's
2	x	PS Hams	PS Hams
3	x	Oswald's	Lilliput
R	x	PS Hams	PS Hams
	Pearl Winter White 5	Normal Chinese 6	Dom Spot Chinese 2
1	Lilliput	Lilliput	Lilliput
2	Oswald's	Lilliput	Lilliput
3	PS Hams	Lilliput	x
R	PS Hams	PS Hams	x
	BE White Chinese 3	Normal Roborovski 3	Junior 0 entries
1	Lilliput	Lilliput	x
2	Lilliput	Lilliput	x
3	Lilliput	PS Hams	x
R	x	x	x
	Novice 0 entries	Intermediate 0 entries	Small Hamstery 0
1	x	x	x
2	x	x	x
3	x	x	x
R	x	x	x
	Breeder 28 entries	Young Stock 21 entries	Grand Challenge 29
1	Lilliput	Lilliput	Lilliput
2	Lilliput	Lilliput	Lilliput
3	Lilliput	Oswald's	Lilliput
R	Lilliput	Oswald's	Lilliput
	Non-Standard ? entries		
1	PS Hams		
2	PS Hams	Dwarf BIS	Dwarf Reserve BIS
3	PS Hams	Lilliput Hams	Lilliput Hams
R	PS Hams		

CoM = Certificate of Merit. Hamsters need 3 of these to become a Champion.

## Show Secretary's Report. Sheffield Show 24 March 2024

Firstly, a major thank you for all those who volunteered to help at very short notice when our Syrian Judge Victoria Holt was unable to come through illness.

It was a multi layered shift round of responsibilities!

Wendy Palmer who was rota'd to run the kitchen got it all set up then undertook the Syrian Judging with Catherine Mason as Book Steward. I was then going to take over the catering and my role as Show Secretary on the day was taken over by Emily Howard from Oswald's Hamstery. However, my daughter and son in law Amanda and Norman Pohl-Dray who were going to lend me a hand in the kitchen basically took it over and ran it for the day leaving me free to say hello to some folk we had invited along from the Cavy fancy who entered in Pets and let us talk to their guinea pigs and talked us through how to look after longhaired guinea pig coats. I also got to talk to some of our other visitors and to a couple of other prospective members for the Northern Hamster Club. Thank you also to Fraser Avill for judging the Dwarf Show and Susan Washbrook for Book stewarding and Andrew Bryan who did a sterling job of pen stewarding for both shows.

I would also like to thank Emma Jewsbury for judging our pet's class. We had 10 pets entered and the class was won by Freya Burland.

Best in Show Syrian went to Oswald's Hamstery with Moonstone Hamstery taking Reserve Best in Show. Best in Show Dwarf and Reserve Best in Show went to Lilliput Hamstery.

Congratulations to all the winners and my grateful thanks for those that stepped up to unexpected duties at the last minute!

Anne Dray

	<b>Pet Class</b> <b>10 Entries</b>
	<b>Judge:- Emma Jewsbury</b>
<b>1</b>	Freya Burland <b>Best Pet in show</b>
<b>2</b>	Clare Paton
<b>3</b>	Lizzie
<b>R</b>	Bordesley Green School
<b>VHC</b>	Clare Paton
<b>HC</b>	Lizzie
<b>C</b>	Freya Burland

## Dwarf Hamster Report - Sheffield 24<sup>th</sup> April 2024

Thank you to the Northern Hamster Club for the invitation to judge the Dwarfs at Sheffield. Well done to those exhibitors who are working so hard to keep these lines going. It was really nice to see all species on show today and in a range of colours.

### **Campbell- AOC Agouti**

1<sup>st</sup> 77.5. D201. Opal. Excels in type, Cobby and broad throughout. Well defined arches, touch pale in top colour. Bar rub on nose. Well presented – touch toe nails. My first on the table and that was where it stayed for the duration of the show. BIS- **COM**

### **Campbell- AOC Self**

1<sup>st</sup> 63.5. D301. Albino. Slightly long narrow head. Slightly stained under. Fur breaking over the shoulders. Slightly down on body condition today.

### **Winter White- Normal**

1<sup>st</sup> 71.5. D503. Lovely shape to the body and head. Fantastic breed type, from head to tail. Roman nose in good moderation with width of skull. Narrow intermediate band.

2<sup>nd</sup> 68.5. D507. Touch off in topline. Good evenness of top colour. White patches on chest. Touch moult carried on rump.

3<sup>rd</sup> 68. D502. Slightly narrow head. Fair top colour narrow intermediate band, uneven ticking on the arches.

### **Winter White- Sapphire**

1<sup>st</sup> 71.5. D601. Lovely type body and head. Good even top colour, pale intermediate band.

2<sup>nd</sup> 68.5. D606. Fair type and shoulder. Slightly creamy top colour and intermediate band. Carrying moult. Nick in ear.

3<sup>rd</sup> 67+. D602. Broad head, good nose. Slightly long in neck. White band on chest. Pale intermediate band, white hairs/patches in top.

### **Winter White- Pearl**

1<sup>st</sup> 72.5. D702. Sapphire. Fantastic body shape, touch small in head. Touch uneven ticking.

2<sup>nd</sup> 69. D701. Normal. Nice touch to coat, touch moult on shoulder. Even ticking, touch heavy ticking on the head.

3<sup>rd</sup> 66.5. D705. Normal. Touch back in body. Long in neck. Stained underneath, fairly even on top. Long toenails.

### **Chinese- Normal**

1<sup>st</sup> 72.5. D801. Good body and type what I would call an old-fashioned Chinese type. Fairly rich in colour good depth, even top. Slightly short stripe.

2<sup>nd</sup> 71. D802. Fair Colour, good depth, even in top. Slightly narrow head, slightly short stripe. Good size.

3<sup>rd</sup> 70.5. D804. Good type. Slightly uneven top colour, pale dorsal stripe.

### **Chinese- Dom Spot**

1<sup>st</sup> 73.5. D902. Touch narrow in head. Clean, rich in colour, touch narrow in intermediate band. Good stripe. Distinct patches of colour but lacks spots.

2<sup>nd</sup> 69.5. D901. Touch narrow in head. Short stripe, pale in top colour, and banding. Touch brindling in spots. Nick in ear.

### **Chinese- Black Eyed White**

1<sup>st</sup> 77.5. D1003. Nice head. Nice touch to coat, sheen on topcoat due to strong guard hairs. Touch on left eye. RBIS- COM

2<sup>nd</sup> 69.5. D1001. Nice head. Shown clean. Spot in ear, slight nice in ear.

3<sup>rd</sup> 67.5. D1002. Nice head, shown clean. Nick on the back of the neck. Uneven fur.

### **Roborovski- Normal**

1<sup>st</sup> 71. D1102. Good type and head. Good head markings. Rich colour on rump. Narrow in intermediate banding over the shoulders. Shown clean.

2<sup>nd</sup> 67. D1102. Fair depth in colour. Nick in ear. White patch on the left shoulder. Lacking colour on face.

3<sup>rd</sup> 66. D1103. Fair type. Lacking a little body. Pale top colour, Lacking intermediate band. Touch colour on the face. Slightly stained.

### **Non-Standard**

1<sup>st</sup> 52.5. D2101. Roborovski- Nice fur, and type. Slight staining, slightly long toenails.

2<sup>nd</sup> 51+. D2104. Winter White Normal Pearl. Good shape, broad skull and body shape. Nice touch to fur, shown clean.

3<sup>rd</sup> 51. D2105. Campbell. Touch condition on rump. Slightly narrow head. Touch open in coat.

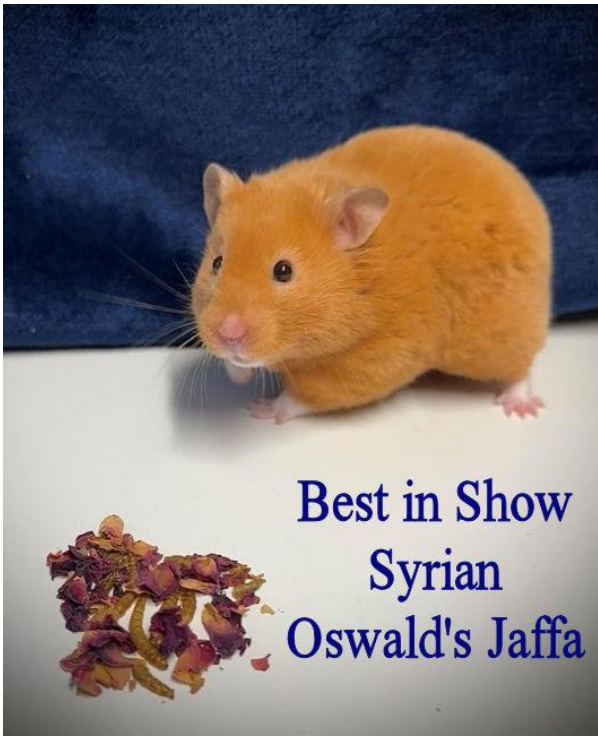
### Judge Mr Fraser Avill



Congratulations to all who did so well at the Sheffield show. Best in Show Syrian was a Copper male from Oswald's Hamstery and Reserve best in show was a yellow male from Moonstone Hamstery. In the Dwarf section Best in Show was an Opal Campbell from Lilliput hamstery and Reserve Best in show was a Blacked White Chinese also from Lilliput.

### Lynne Blair





Winners from the  
 Sheffield Show

